

## WALLBOX PRIME THREE-PHASE

### SMART T2TC model

### Manual Installation - maintenance - use



## Index:

1	Introduction - Safety information	Pag.3
2	Mechanical installation	Pag.4
3	Specifications	Pag.6
4	Components description	Pag.7
5	Electrical installation	Pag.8
6	LED indicators	Pag.11
7	Charging procedure	Pag.12
8	Using the APP	Pag.13
9	Periodic controls	Pag.14

## INTRODUCTION

This manual contains all the necessary information for the safe use of the **Detas EVchargers Prime** system for electric vehicle charging and will guide you to obtain the best performance and use from the system.

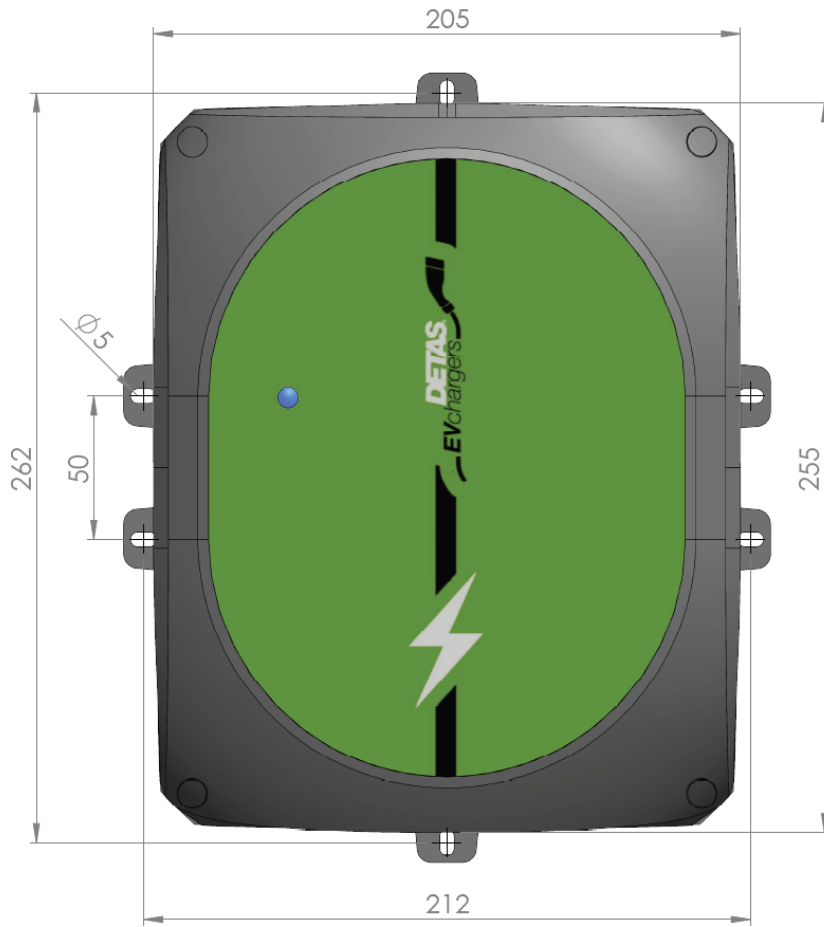
Our **Detas EVchargers** charging stations employ the latest technology and provide the most advanced service on the EV charging market.

The **Wallbox Prime** charging system is designed to be easily installed both outdoors and in covered private parking lots, in order to charge all the EV brands on the market in MODE 3 (according to the European IEC 61851-1 standard), simply by plugging the connection cable with a type-2 connector.

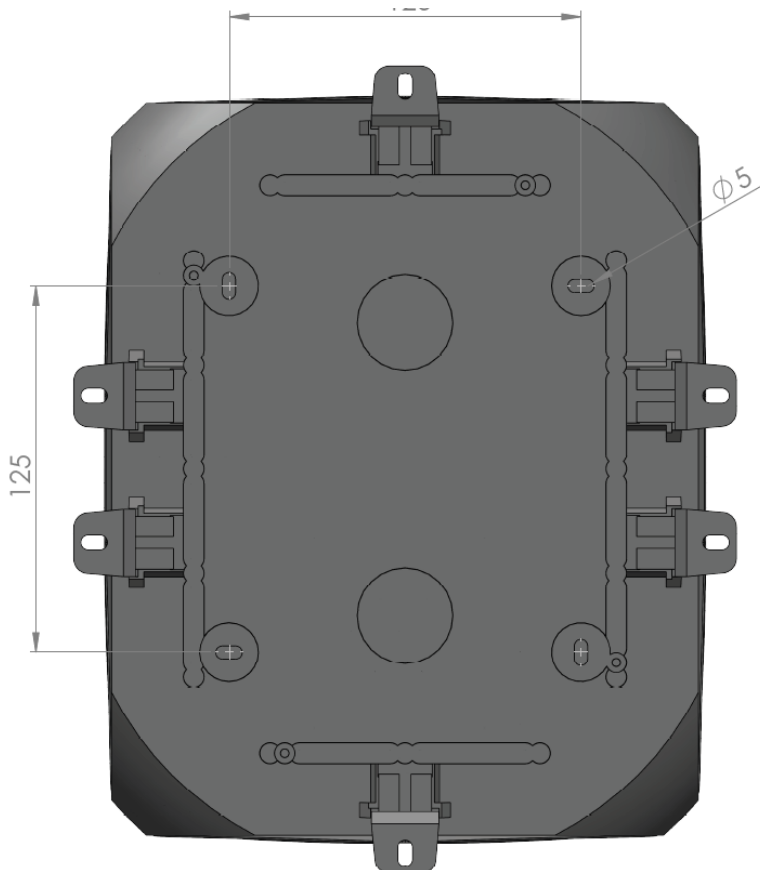
## SAFETY INFORMATION

- The wallbox must not be installed in areas with a risk of explosions.
- The wallbox is designed to be installed both in open and closed areas. It must always be installed safely and with suitable protections.
- In case the wallbox is installed outdoors, it is recommended to employ a roof for direct protection from water.
- Do not install the wallbox in areas where it can be damaged by falling objects.
- The wall surface where the wallbox will be positioned must withstand the mechanical forces to which it is subjected.
- Do not employ this wallbox for purposes other than electrical vehicle charging uses indicated in the IEC 61851 standard.
- Do not modify the unit. In case of modifications, **Detas EVchargers** will reject all responsibility and the warranty will become invalid.
- Follow the electrical safety standards rigorously.
- Do not attempt repairs or manipulations with the wallbox connected to electricity.
- Only trained and qualified personnel has access to the low-voltage electrical components inside the device.
- Make qualified technicians only check the wallbox every year.
- Remove any item with signs of damage that can be dangerous for a human (broken plugs, lids that do not close, etc...).
- Use only **Detas EVchargers** replacement parts.
- Do not use this product if the EV latch or connector is broken, cracked, open, or showing signs of damage.
- Before proceeding with the installation, make sure that the power supply voltage corresponds to the nominal one for the device and that the quality of the electricity supplied to the wallbox is compliant with the EN50160 standard.
- Install surge protective devices with an earth connection in the main power switchboard, as prescribed by the installation zone according to the EN62305-1/4 standard.

## MECHANICAL INSTALLATION



**Front view  
(external mounting)**



**Rear view  
(internal mounting)**

## MECHANICAL INSTALLATION

### INSTRUMENTS REQUIRED FOR THE INSTALLATION (NOT PROVIDED)

N°1 Flat screwdriver	N°1 Philips screwdriver	N°1 Electric drill	N°1 Electric screwdriver	N°1 wall drill bit D9mm	N°6 Fischer M4
					

### MECHANICAL INSTALLATION PROCEDURE

- Open the frontal screws. The correct screwdriver to be used is a small flat one, such that it can enter into the screw by insertion until the bottom of the slot, where the plastic is thicker.  
If a large flat screwdriver is used, it will stop at the top of the screw, which can become damaged because there the plastic thickness is smaller.

- Open the lid towards the right by paying utmost attention not to tear the connection cables

- Mount the Wallbox on the wall (see wall-mounting dimensions on page 8)



- Using Fischer M4 / drill-bit diameter 9 mm wall anchors

Warning:

- It is recommended to use a screwdriver to execute the last fixation turns
- Make sure that the electric screwdriver does not damage the cables

- Using the provided side brackets for a protrusion fixation



## Notes:

The EV charging station mainly employs Type 2 sockets.

The charging station connectors are compliant with the EN 62196 standard.

It is forbidden to lengthen/join the connector wires without authorization from the manufacturer.

No operations are allowed apart from those described in the present manual for solving plug-related problems.

## TYPE 2



### SPECIFICATIONS

**Input voltage:** three-phase with neutral 400VAC  $\pm$  10% 50/60Hz (L1, L2, L3, N, PE)

**Output Power:** Max 22kW (32A)

**Mechanical resistance:** IK09

**Protection degree:** IP65

**Housing material:** PC

**Operating temperature:** from -25°C to +45°C

**Storage temperature:** from -40°C to +60°C

**Operating humidity:** from 5% to 95% without condensation

**Network connection:** IoT GSM / WiFi

**Signaling:** RGB color indicator

**Meters:** MID certified

**Payments enabled:** On request

**Dimensions:** 205 x 255 x 112 mm

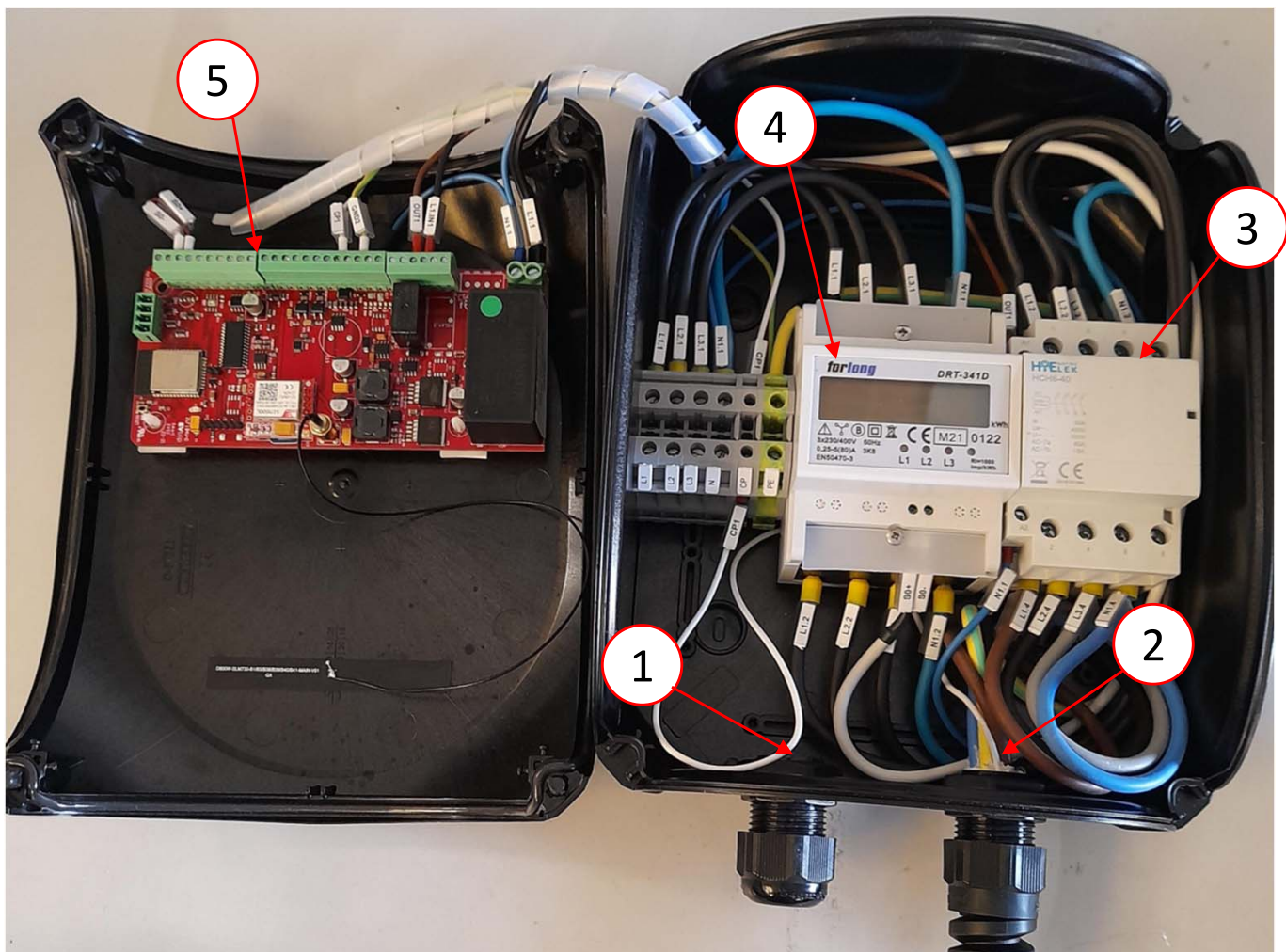
**Weight:** 4,7 kg

**Pedestal for wallbox:** On request

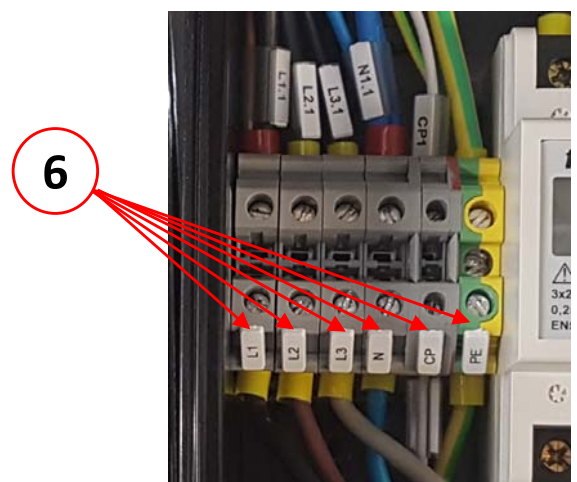


## 5 COMPONENTS DESCRIPTION

- 1 Power supply cables inlet
- 2 Vehicle connection cable inlet
- 3 Three-phase relay
- 4 MID certified meter
- 5 Control board



6 Power supply terminals L1, L2, L3, N, PE



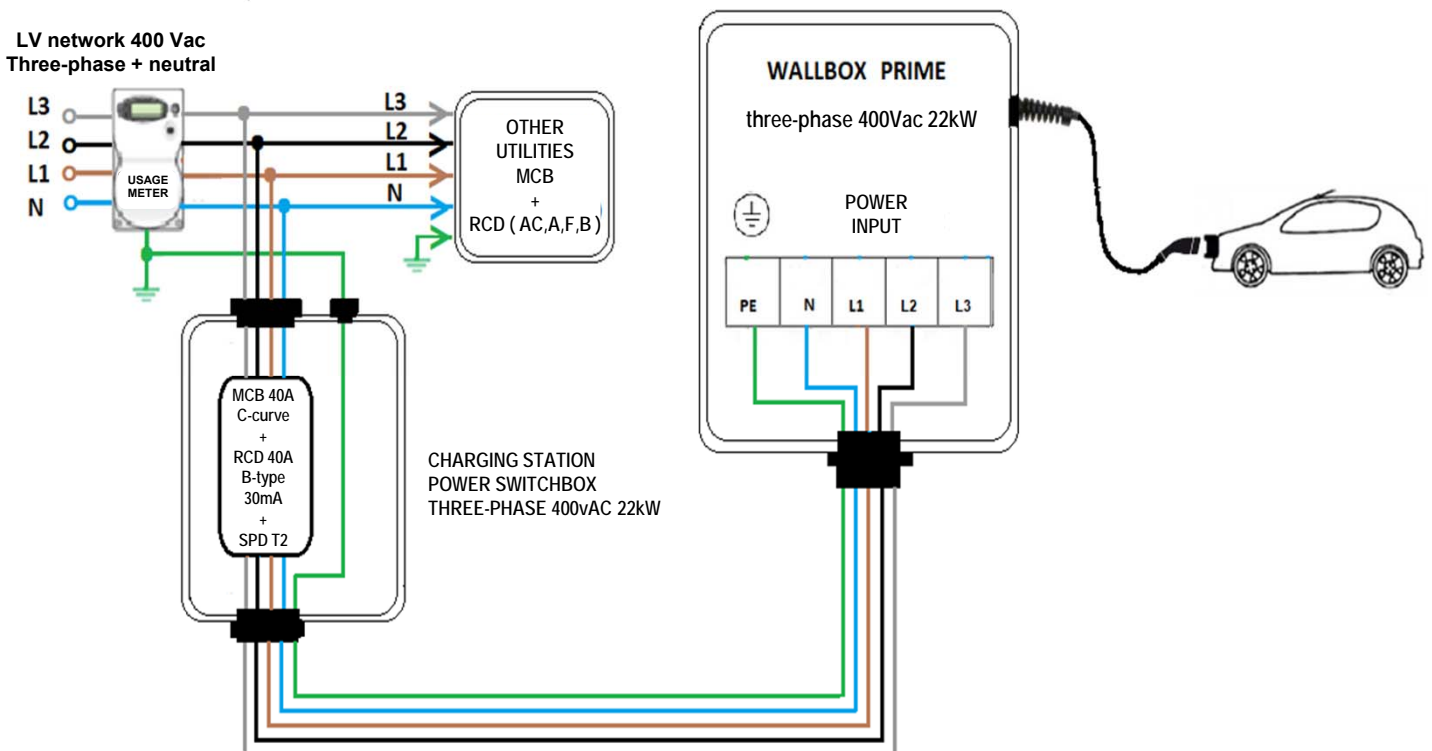


**Before proceeding, read the instructions carefully to ensure a correct installation of the charging station.**

The wallbox installation must be performed only by qualified personnel. During the installation and/or maintenance operations, remove input power and use protective gloves and goggles.

## Preliminary operations (Warnings)

1. Before proceeding with the wallbox installation, make sure that the power supply voltage corresponds to the nominal one, and that the quality of the supplied electricity is compliant with the EN50160 standard.
2. Install surge protective devices with an earth connection in the main power switchboard as prescribed by the installation zone according to the EN62305-1/4 standard.
3. At the end of the installation, use an appropriate instrument to verify the earth connection's correctness.
4. Make sure that the wallbox is installed in an area with GSM network coverage or a Wi-Fi connection. It is a necessary condition for a correct product's operation.
5. The switchboard that powers the wallbox should include a C-curve magnetothermic circuit breaker (MCB) for protection against overloads and short circuits and a 30mA B-type residual current breaker (RCD).
6. It is compulsory to follow the schematics below during the installation process



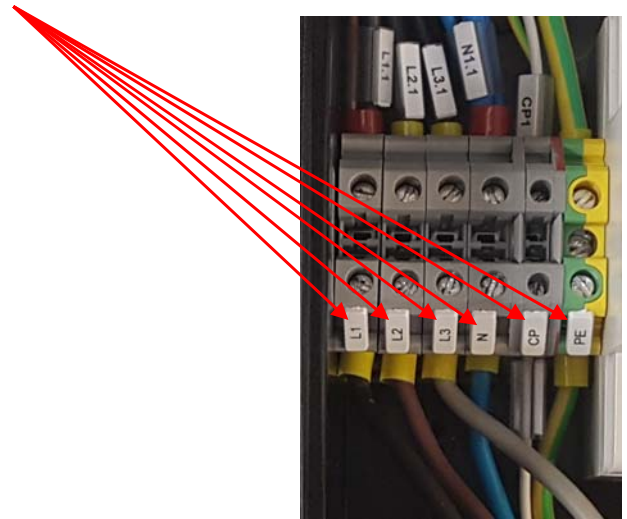
Note: the wallbox must be connected before the protections of other utility devices. To protect the wallbox we suggest our RCBO 40A type B 30mA (integrated MCB+RCD)



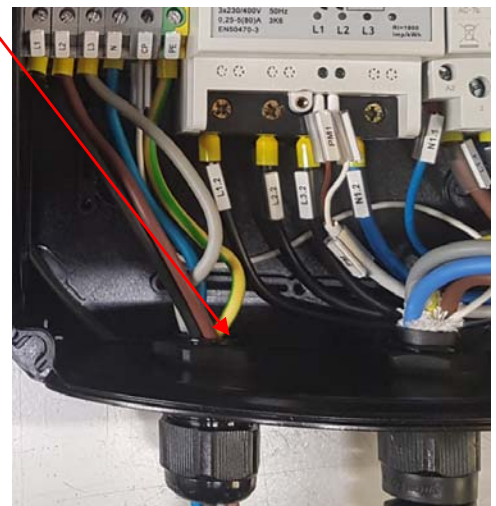
## ELECTRICAL INSTALLATION

Installation procedure:

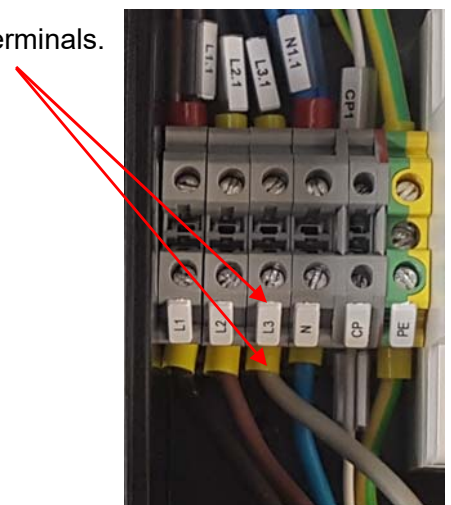
- 1) Verify that all the terminal labels are correctly positioned (as in the image below) and have not fallen off during transportation.



- 2) Insert the **AC** supply cables into the free wallbox cable gland.

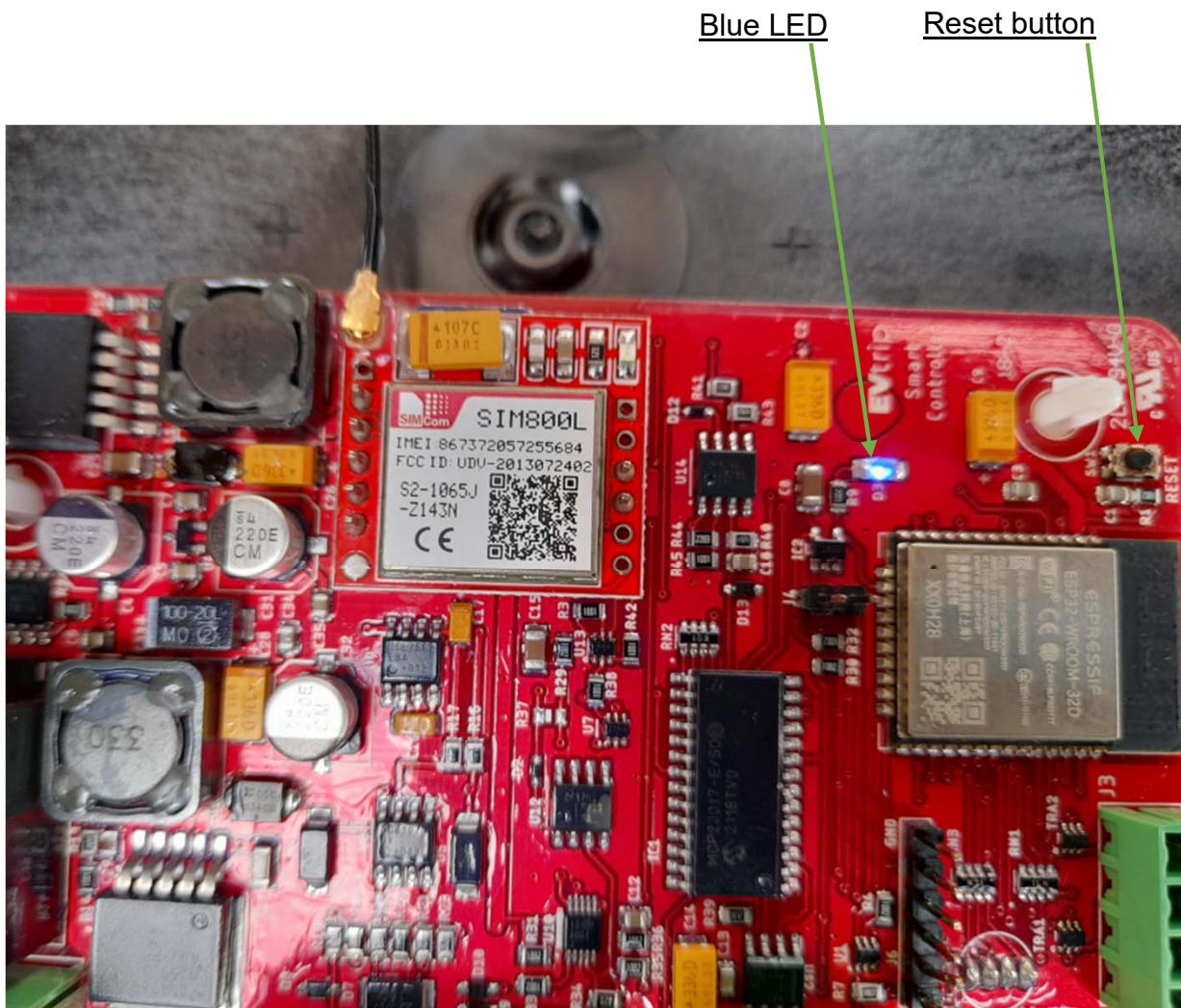


- 3) Connect the power supply **PE** , **L1** , **L2** , **L3** , **CP** , **N** to the respective terminals.



Note: the screw terminal for AC supply cabling is compatible with cables up to 10 mm<sup>2</sup>. Using a cable with single sections of at least 6 mm<sup>2</sup> is recommended. In case the distance between the junction box and the respective magnetothermic and residual current breakers is significant, it may be necessary to increase the section of the employed cables according to a suitable calculation.

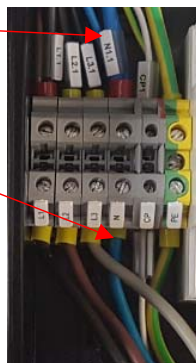
4. At the first activation, the installer has to call +39 0302594120 to verify and proceed with the wallbox registration, otherwise it will not function.
5. In case the wallbox is not working, disconnect the power supply, wait for 20 seconds, and power it up again.
6. If the blue LED on the wallbox board is not blinking, push RESET for 1 second to make it blink again. Otherwise, call +39 0302594120 and request support.



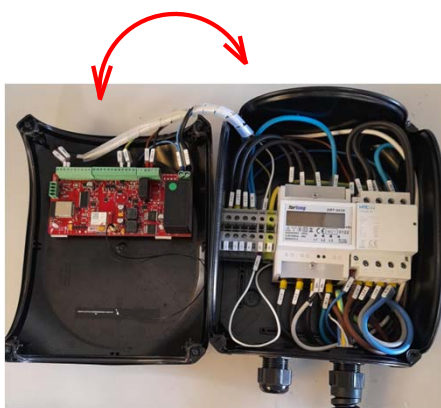
4) Verify that the antenna is correctly inserted into the appropriate connector and that it has not detached during transportation



5) Once the power supply is connected, perform a verification at the neutral terminal to ensure a correct connection



6) Close the wallbox lid and carefully fasten the plastic screws.



**Note:** for the electrical safety device installation to protect the wallbox, a 40A 30mA magnetothermal residual circuit breaker (C-curve for the MCB and B-type for the RCD) is recommended. The corresponding product code in the EVchargers catalog is 245.



## LED INDICATORS

### STEADY RED LED

Offline / Connection ongoing /  
Generic error



### FLASHING GREEN LED

Connected, ready for charging



### STEADY BLUE LED

Charging





## CHARGING PROCEDURE

Verify that the LED indicator is green, showing that the unit is available and ready for charging



Connect the cable of the **Wallbox Prime Smart** to the vehicle to start charging

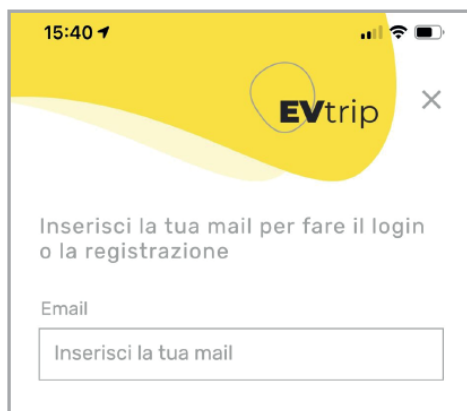


## USING THE APP

Download the **EvTrip** App from Play Store or Apple Store on your smartphone, or directly scan the following QR code:



Use your email address to register within the app.

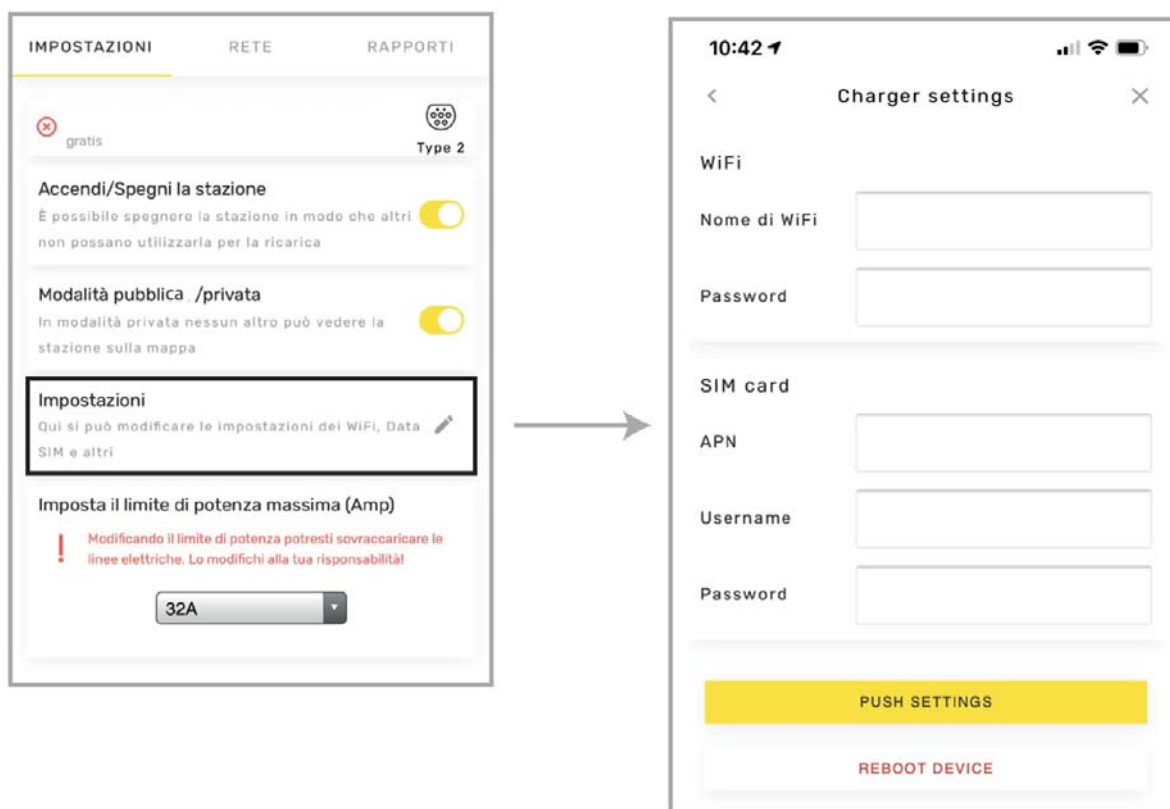


Send an email to [info@evchargers.it](mailto:info@evchargers.it) indicating the following details:

- Name
- GPS coordinates
- BLE Device Name (a unique code located inside the wallbox)

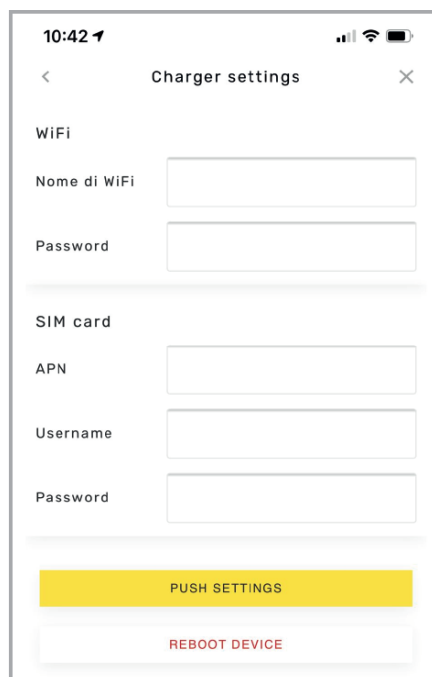
Connect the Wallbox to the smartphone via bluetooth in order to manage its settings.


**Note:** During the pairing, it will be necessary to enter the “BLE Passkey” on the smartphone. This code is located on a label inside the Wallbox





Connect the Wallbox to the network using a WiFi connection or a data SIM card, if available



 The Wallbox will **not** be operating if it is disconnected from the network

## Notes:

It will now be possible to set the output power, **the default value is 25A**

- The LED can be green or green/red (if no connection is available)
- Wait for 30 seconds
- Connect the cable to the car, the charging process will begin within 15 seconds and the LED will turn blue or blue/red (if offline)
- Stop the charging from the car or from the app

## PERIODIC CONTROLS

The PRIME Wallbox has to be periodically verified by performing routine checks and maintenance operations.

In particular, daily maintenance contents and operations forbidden to unauthorized personnel are:

- It is forbidden to access the charger files or turn on/off the power supply for the non-professionals/not-in-charge personnel.
- Do not use floating cables, connecting cables or bridges.
- Verify the operating state of the charging station monthly regarding RCCB, switches, charge connectors, modules, etc.
- Use a dry cloth to wipe the connector dirt monthly, leaving the plug dry and clean.
- **Verify the tightening of all the cable connectors for all the internal components yearly.**

This document is protected by **Detas Evchargers S.p.a.** copyright

All rights are reserved. **Detas Evchargers S.p.a.** reserves the right to make modifications to the products described in this manual at any time and without notice.

This manual cannot be reproduced, copied, translated, or transmitted in any of its parts, in any shape or content, without the written authorization of the original manufacturer. The information provided in this manual is accurate and reliable. In any case, the original manufacturer does not assume any responsibility for its use, or for the violation of third-party rights which may result from its use.

All the other registered product or brand names are the property of the respective owners.

